

Principle

Rhea Light mini is light and practical. It is accurate and safe without reducing energy, and has multiple advantages such as "deep penetration, fast effect, short treatment course, lasting effect, and with wide indications" to ensure that the energy of each applicator can evenly penetrate the entire muscle tissue. It has been recognized and widely used by global theaters due to its convenience, non-invasive and quick results.

Configuration advantages

- **Intelligent chip:** precise operation energy is directly without deviation.
- **Advanced temperature sensor:** Intelligent temperature control, to achieve stable output.
- **Golden Electromagnetic Vibration Wave:** Deeply stimulate hormone secretion and enhance quality of life.



Swan's modeling
360° solid quality



Independent
desktop Portable



Elegant and Small
Remarkable

Treatment mode

VAL treatment mode: 360° whole vagina treatment.

VUL repair mode: non-invasive penetrating treatment to the vulva.

Muscle physiotherapy mode: act on body underlying muscles, enhance cell activity and metabolism.

Energy advantages

Privacy layer: make the vaginal mucosa firm and enhance quality of life.

Connective tissue: make the deep layer warmth and promote collagen regeneration.

Muscle layer: use the only one effective energy source for muscle and nerve rehabilitation.

Mucosal epithelium: adjust the acid-base balance of the vagina and enhance resistance.

Treatment advantages



Unique medical applicator

Strictly selected high-quality medical materials, with high energy efficiency on the skin.



Smart chip

The intelligent identification the applicator is new, and high-precision energy output at one time to ensure that the right person for a special use.



Safe, hygienic and comfortable

Medical disposable applicator, safe and hygienic, intelligent temperature control, comfort level enhancement.



Effective advantages

Immediate effect, Instantly firming

The clinical effect shows that the firmness is increased by 30% in one treatment, the private health and pelvic floor muscle can be repaired in an all-round way after 3-4 times.

Precise and durable recovery

Remodel the original protein and fascial cells, stimulate the regeneration of nervelet and small blood vessels, it is effectively improving the function of the pelvic floor with lasting effect.

Non-invasive and painless

There is no downtime and the quality of life enhancement. It is the first choice for thousands of women for private health.



Immediate
Effect



Lasting
Improvement



Recovery Of
Superficial Muscle



Recovery Of
Private Health

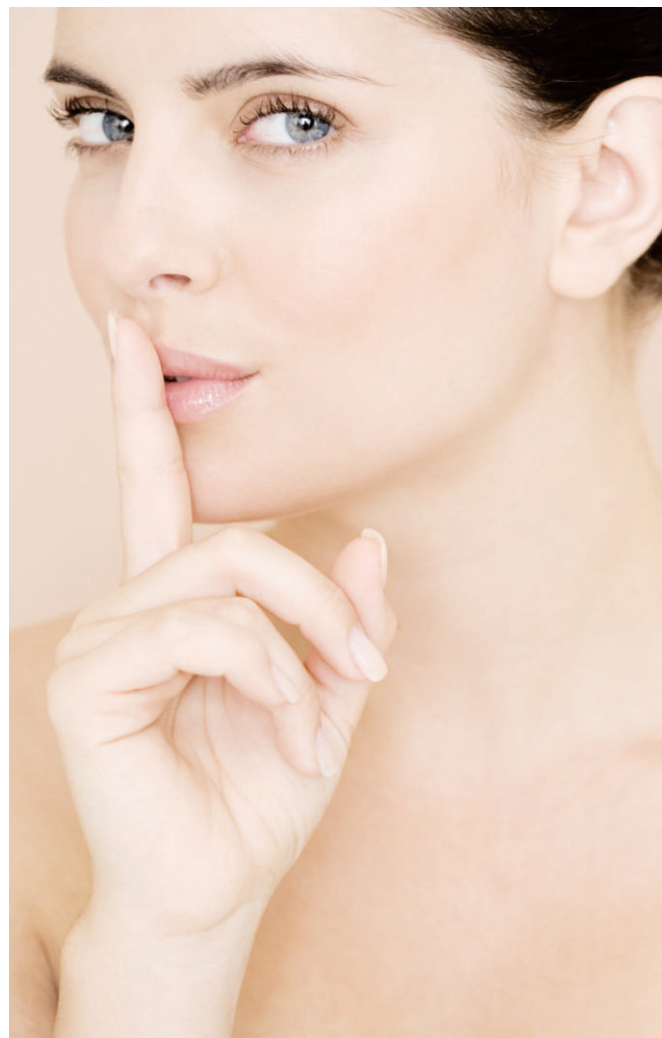
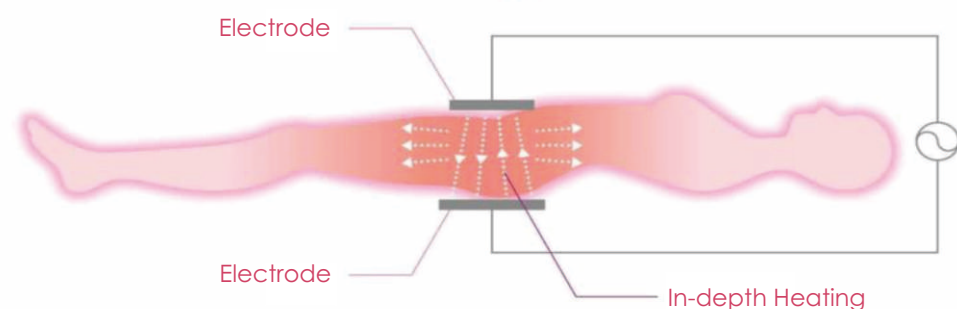


Recovery and Care
Of Large muscle group



Principle

EHIT "Endogenous Heat Immune Technology" uses the magical modulated wave frequency of 448KHZ and 20KHZ to make cells move across the membrane, it generate deep-source heat and penetrate the body system, directly acting on various tissue cells of the body and activating body functions. The energy go deep into the bones, muscles and then to the viscera and organs, increasing the metabolism and anti-aging functions of the whole body.



Base temperature enhancement

Visceral function conditioning

Sub-health improvement



Make the body age down Every cell full of vitality

Thermal therapy: Enhance base temperature, rgulate the physical acidic constitution .

Immunity: Clear aged cells and toxins and improve immunity.

Senescence: Activates body cells and helps tissue cells to regenerate.

Body sculpting: Reduce excess fat, tighten the skin, lose weight and sculpt your body.

Pain: Regulate chronic pain in shoulders, neck and waist, improve microcirculation and muscle regeneration.

The professional care brought by EHIT will truly activate your body's various functions and improve your sub-health state.

Technology Application



Reliable temperature control

The built-in high-precision temperature sensor is evenly distributed in energy and does not require frequent inspection of the temperature of the tissue, which has high accuracy and high stability. The resolution is 0.01°C and ±0.03°C, which can realize real-time temperature control based on monitoring data.



Advanced heating method

The unique design can heat the subcutaneous and deep skin tissues evenly, and increase the temperature of all parts of the body, thereby avoiding the risk of burns caused by local skin high temperature, it is automatically eliminating energy concentration to ensure energy distribution uniformly.



No damage to normal cells

It is no side effects and no damage to other tissues, it safely helps the body metabolize waste, carbon dioxide and lipid junk cells in fat.

Professional repairation ability

Dead cells clearance in 30 days

Visceral fat removal in 30 days

Immunity enhancement by 2 times

Metabolism enhancement by 6 times

Pain decreases 81%

Visceral fat reduction 4-6 levels

Muscle strain recovery 97%



Non invasive | Private Anti-Aging

UMSella is a scientific and technological instrument using focused magnetic vibration technology. It is mainly used to pelvic floor muscle recovery, improve stress urinary Incontinence, postpartum recovery, privacy tightening, etc.; It is a long-term, comfortable pelvic floor muscle rejuvenation project and no pain, non-surgical, non- invasive, no downtime.



Principle

High-intensity Focused Electromagnetic Waves Stimulate The Pelvic Floor Muscles

Electromagnetic Energy Focused Pulse→ Deep Penetration→Stimulate Pelvic Floor →1 Treatment → 12,000 Pelvic Floor Muscle ContractionsMuscle



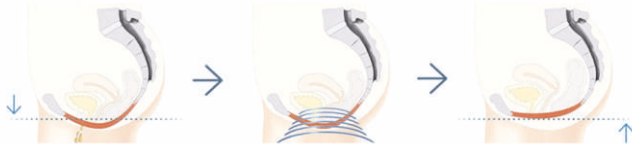
- Pelvic Muscle Rejuvenation
- Comfortable Treatment
- Obvious Effect

Dual Mechanism

Sacral Nerve Stimulation: Through the high-intensity magnetic field, it directly acts on the sacral nerve, promotes the repeated synchronization of neurons before and after the synapse, strengthens the nerve muscle reflex arc, and improves the nerve's innervation of the target organ.

Pelvic Muscle Stimulation: The pulsed electromagnetic field penetrates muscles and fat tissues without attenuation, effectively stimulates the peripheral motor nerves of the pelvic floor, triggers nerve depolarization, generates induced currents and transmits them to the motor endplates, triggers repeated contractions of muscles, thereby strengthening the pelvic floor muscle strength and muscle endurance.

Applications of UMSella



Comprehensive improvement

Pelvic floor dysfunction (PFD), stress urinary incontinence, pubococcygeous enhancement

Post-partum Recovery

Improve postpartum problems, metroptosis, quality of life improvement, urine leakage etc.

Women's Health

Rehabilitation of pelvic muscles, women's private health improvement

Advantages of UMSella

Ergonomic Design: The arc-shape fits in the waist-hip curve and achieves the effect directly.

Electromagnetic Stimulation: Stimulate deeper and wider pelvic floor muscles and nerves.

24/7 Operation: 72- hours work without stopping, high efficiency.

Customized Data System: Make your own personalized treatment plan based on clinical needs.



Quality of Life Improvement



Prevent Stress Urinary Incontinence



Post-partum Recovery



Rehabilitation of Pelvic Muscles



Pubococcygeous Enhancement



Women's Private Health Improvement



SculptIris®

Non-invasive 1060nm Fat-Dissolving Laser

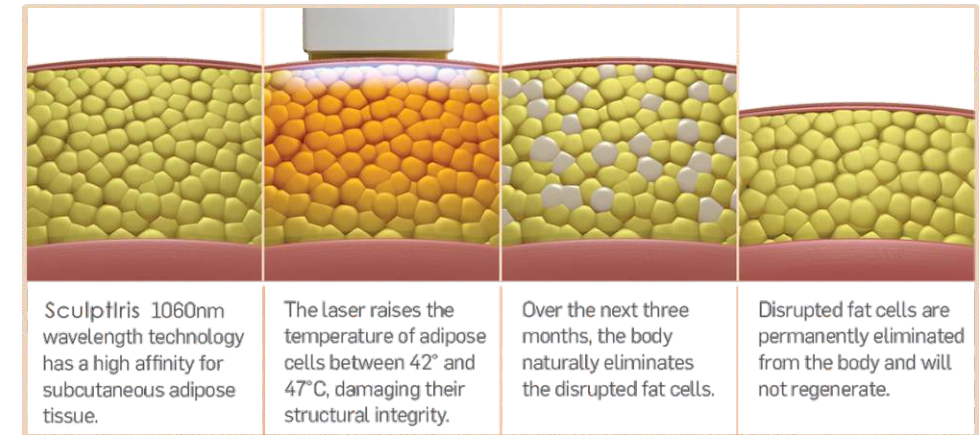
- Stubborn Fat Terminator
- Suitable for those who have stubborn fat in abdomen, thigh and waist, but resistant to diet and exercise.

Slimming Laser

1060nm will help you to build 360°curved shape body

Principle

1060nm laser lipolysis is the world's first FDA-certified non-invasive device to break down solid cellulite of the body. Using laser's affinity for stubborn subcutaneous fat, targeted action on fat cells to inactivate fat cells, thereby reducing the volume and number of fat cells, and achieving the effect of permanently dissolving fat.



Advantages of 1060nm

The 1060m wavelength targets to adipose tissue accurately, without any side effects on other surrounding tissues.



Short Treatment Time

A single treatment takes only 25 minutes to achieve the desired effect



Smart Cooling and Non-Invasive

Intelligent cooling system, comfort, safe, non-invasive and no downtime.



Best Effective

Clinical data shows that after 6 weeks of treatment, the amount of fat is reduced by 30%, and the circumference can be reduced by 5-10cm in a single time.



Lasting Effect

Cumulative heating technology provides the most stable effect, with clinical satisfaction as high as 96%.



Long Working Hours

The perfect cooling system can ensure continuously 24-hour working time.



Inductive Contact

100% energy of the applicators penetrates the subcutaneous layer and effectively acts on the fat layer.



Easy and Flexible

4 applicators can treat different areas of different clients and brings you a hands-free and convenience operation.

Advanced Radiofrequency Ablation (RFA) Strong Power Outstanding Appearance

Using the unique focused high-energy radio frequency technology, the high-frequency, lossless energy target is focused on the subcutaneous fat layer, while the fat thickness of each part is accurately positioned, and the fat is accurately and completely crushed and the fat volume is reduced. It is a collection of shaping, A multi-dimensional integrated instrument for firmness, skin beautification, and conditioning.

Dual-Applicators/Handpieces Satisfy Multi-Choice



Octa-pole Applicators

Body shaping, combined with radio frequency and electromagnetic pulse increase the temperature of the fat area and achieve the purpose of fat reduction.



Six-pole Applicators

It is used on the eye area and other fine areas to lift and tighten, and shape the V face. Restore skin elasticity of face and neck.

Three Technologies, One-Stop Solution

- ◆ Bipolar Radio-Frequency Technology
- ◆ Infrared Penetration Technology
- ◆ Thermal Energy Technology



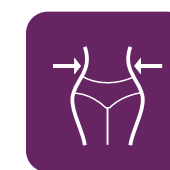
Four-dimensional body



Thermal cellulite



Non-invasive fat burning



Beauty skin shaping



strengthen immune systems



Improve physical fitness

● Body Shaping

Use far-infrared rays to improve the sub-health state of the body, accelerate blood circulation and metabolism, and eliminate toxins in the body inside and outside.

● Fat Dissolving

The powerful bipolar radio frequency energy technology uses soft light waves to burn fat in a fixed point, layer and quantitative manner, from the face to the whole body, non-invasive, fat-dissolving, and skin firming can be done in one go.

● Double-Effect

The thermal energy and massage roller technology will help you to improve blood flow, accelerate lymphatic drainage and keep body balance.

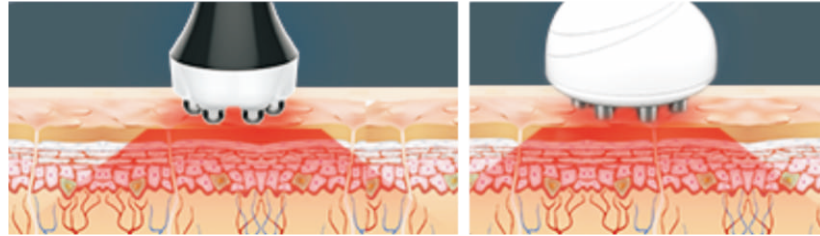
Smart UI

- Simple and intuitive operating system, easy to operate.
- Advanced Real-time Temperature Sensing : with different color to show temperature, from blue to red , very easy for operator.
- Super 250w RF, the whole body can be treated (face, abdomen, upper arms, buttocks, thighs, calves).
- Set experience depth according to different parts, multi-level adjustment, 2 experience applicators for face and body, 360° multi-angle physiotherapy, more accurate.



Principle

MRF-X adopting the newest generation of RF firming technology and the accurate action on superficial, middle and deep layer to achieve the purpose of visceral fat removing and strengthens the reconstruction of the body's microcirculation system, promotes collagen synthesis, improves the flow of active oxygen in cells, and removes fat from the inside out.



Six-pole Applicators



Octa-pole Applicators



Application



Fat Burning & Body Shaping

Dissolve fat cells into the lymphatic system and excrete from the body, thereby reducing the circumference.



Body physiotherapy

Accelerate blood and lymph circulation, activate body functions, improve obesity, deficiency and cold problems



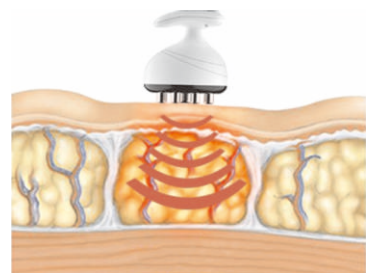
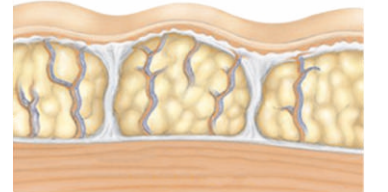
Anti-aging

Aimed at the skin and superficial tissues, it strengthens collagen synthesis and tighten facial tissues.



Regulates viscera

Energy penetrates deeply to improve physical fitness from the inside out, removing excess water in the body and toxins accumulated in the body through the lymphatic system.



Technical advantages



Super Strongest RF 2500W

Skin tightening, accurate targeting, collagen regeneration and metabolism acceleration.



High-end design

Classic matte black shell, simple and textured.



Smart temperature control monitoring

Real-time Temperature Sensing : with different color to show temperature, from blue to red.



Safe and Comfortable

The applicators is insulated with ion coating, shielding electromagnetic interference and more comfortable.



Mechanical applicators

Ergonomically designed applicators fit all parts of the body and labor-saving operation.



Wrinkles Removal



Contour Shaping



Visceral Fat Removal



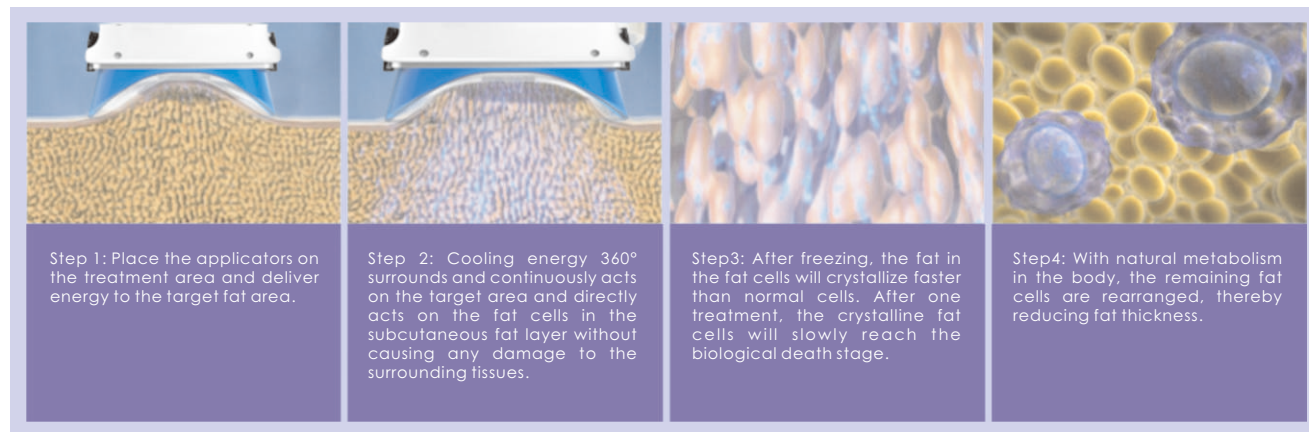
Skin Whitening



Body Shaping

Principle

Utilizing the characteristics of triglycerides in human fat that are converted into crystals at a low temperature of 0°C, non-invasive energy acts on the fat layer of the designated obese area, so that the fat in the obese area is converted into crystals and loses activity at low temperatures. After that, it is excreted from the body through metabolism, so as to achieve a permanent local slimming effect. A single treatment can reduce the number of fat cells by 22.4%.



360°
CoolSlimming

Advantages of cool slimming

- **Precision cooling**
Accurate refrigeration, multi-point temperature control monitoring, 360° circular three-dimensional refrigeration
- **Smart and comfortable**
Intelligent heating, accelerate metabolism, imitate artificial massage
- **Breakthrough**
Breakthrough removable and replaceable applicators
- **Multiple choices**
A variety of sizes of applicators, matching different body contours and body types, to ensure that patients get the most efficient and best cellulite effect.



- ◆ All-round 360°cooling system integrating the three technologies of vacuum negative pressure, freezing and infrared light.
- ◆ Equipped with four ergonomic replaceable applicators, four applicators can work at the same time; three sizes of personalized cooling cups. And equipped with a professional chin applicator can treat different areas .



Advantages of cool slimming

- Non-invasive and no downtime
- Safe, effective and long-term fat melting will never rebound
- With multiple applicators, the treatment time is reduced by more than 50% compared with the same type of products in the market.
- Suitable for multiple parts of the body, easily fight against stubborn fat
- Real-time temperature control monitoring throughout the whole process to protect normal skin.



V-Shape III

Perfect shaping, enjoy body SPA!

Principle

- A super device for shaping and removing wrinkles that integrates 5 technologies such as RF (radiofrequency), VAC (negative pressure), infrared light energy, mechanical rollers, and vacuum suction.

Vacuum negative pressure adsorption promotes skin folding, and performs mechanical action on a uniquely designed roller. Infrared light can promote deep penetration of radio frequency, help stretch fibrous connective tissue, effectively reduce local fat, and promote fiber tightening and tighten body contours. Sculpture a perfect figure, comfortable and non-invasive.



Texture improvement



Health regimen



Body shaping



Size reduction



Postpartum shaping

Unique 10 luxurious applicators

- ◆ According to the treatment site, items, demands, matching applicators. Easily achieve the purpose of perfect body figure, weight loss, skin tightening and skin texture improvement.
- ◆ Reduction of the treatment time and course of treatment to achieve the desired effect.

Technical advantages



① Vacuum Technology

It is used to adsorb the cellulite in a soft and uniform way, no damage to skin.



② Multi-directional mechanical rollers

Wavelike massage speeds up blood circulation and lipolysis.



③ Unique 650nm-1200nm Infrared Light Energy

Optimize energy and accurately target the dermis, increase the safety of treatment.



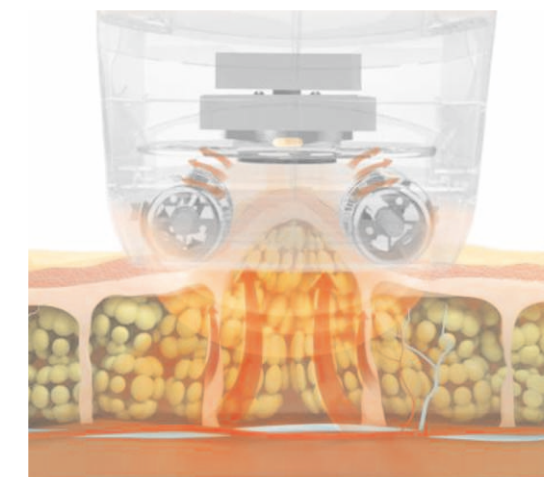
④ Bipolar Radio Frequency

Quickly enter the deep layer to reach a predetermined temperature, melt fat and increase collagen.



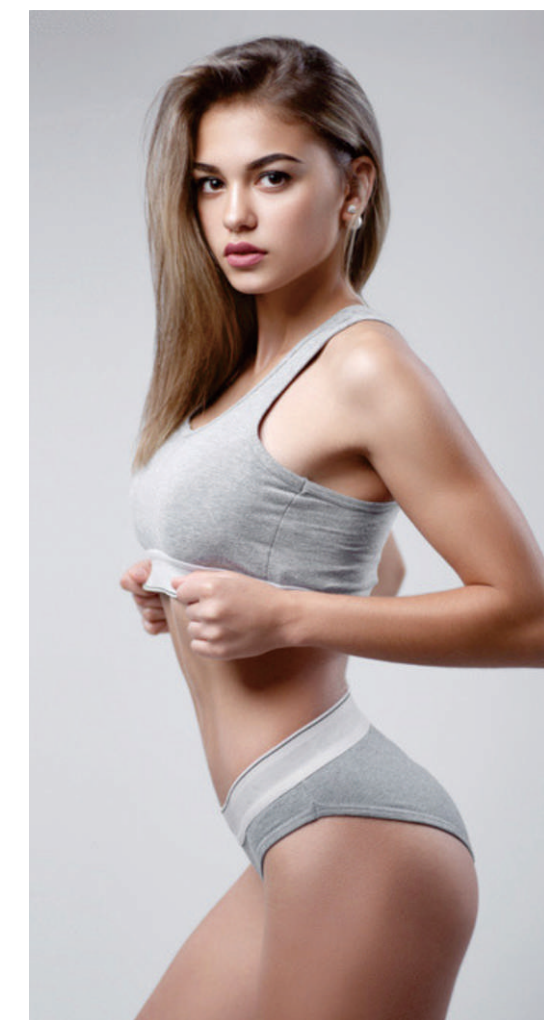
⑤ Suction Technology

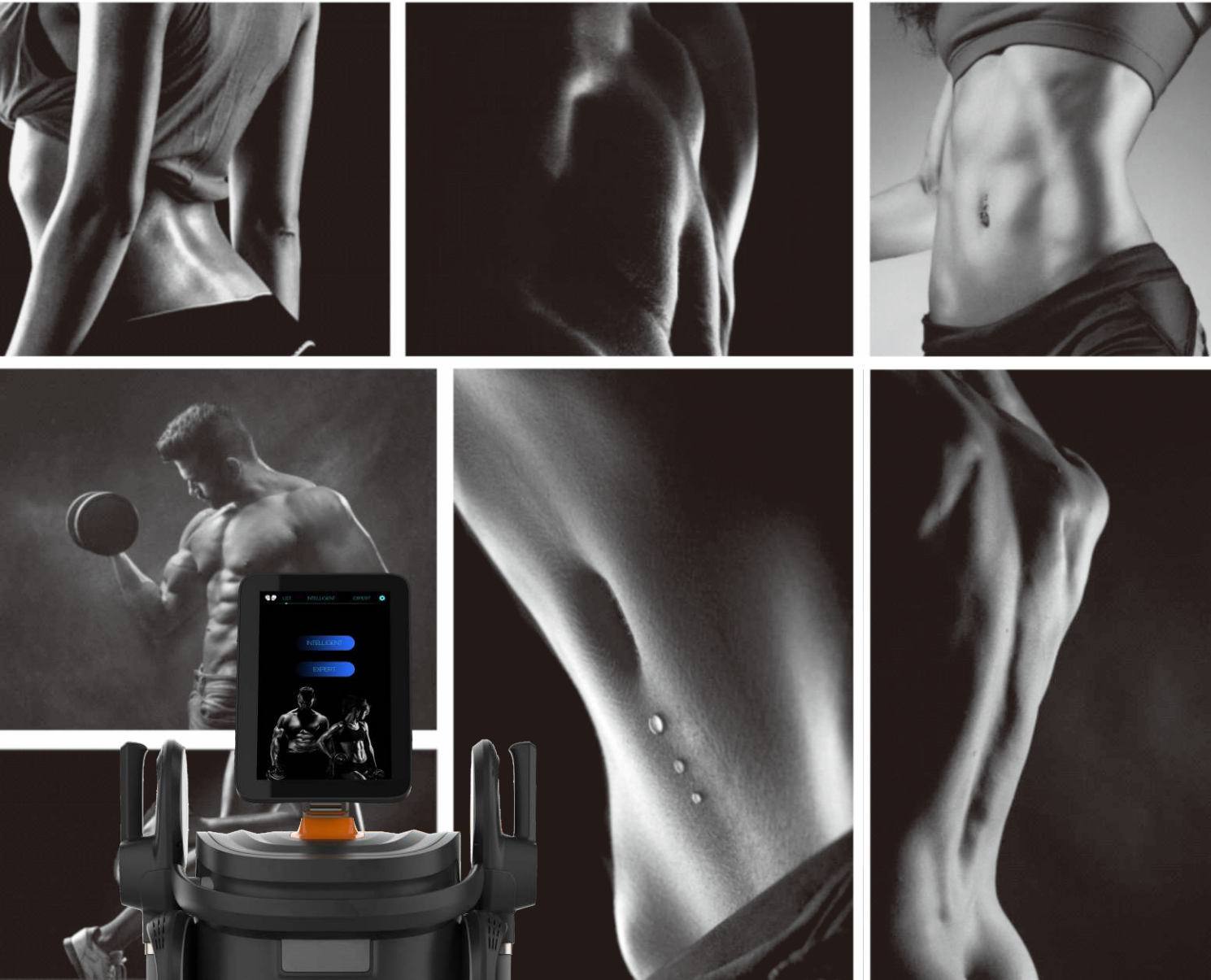
Assist the RF energy to penetrate the skin, ensure the skin to be heated evenly and safely.



Application

- **Fat reduction**
Tighten the abdomen, Shape the waist, Slim limbs, Breast enhancement & Buttocks Lifting
- **Health regimen**
Meridian Treatment, Muscle Soreness Relieve, Physical therapy
- **Texture improvement**
Skin toning/Smooth skin, Face Contouring/Body contouring, Relieve Muscle Fatigue
- **Wrinkle removal**
Neck, Forehead, eye area
- **Cellulite reduction**
Stretch mark, obesity lines





UMS Sculptor®

Non-invasive Fat Dissolving
Muscle Building
Private Anti-Age



Advantage

- 1.Fat Reduction+Muscle Building + Private Recovery, satisfying all need of consumption .
2. Non-Surgical, Non-Invasive, No-Downtime
3. Intelligent interface, convenient for operating and using.
4. Original German imported, the effect and quality are guaranteed.
5. The clinically proven effect is obvious and lasting.

Technology Upgrade

150HZ, more than 20,000 "ultra-muscle exercises", achieving extraordinary performance.

Function Upgrade

For muscle increase, rectus abdominis and pelvic floor muscle recovery.

Configuration Upgrade

The 4 applicators have independent intelligent working modes. No water cooling requested , offering convenient maintenance .

Design Upgrade

The shell adopts high-level aesthetic color and the shape is outstanding.

Ergonomic Upgrade

Intelligent full display and the applicators have a mechanics design.



Multi-Function, New Technology

① (Fat Burning and Muscle Building) Innovative Hifem Technology

The pulse energy focuses more precisely on the muscle group, high frequency increases muscle extension, and enhances the super-speed decomposition and metabolism of cells; At the same time, the high-speed frequency contraction stimulates the growth and strengthening of muscles without affecting the surface skin.

②(Private Health) Patented Electromagnetic Technology

The high-intensity focused electromagnetic field stimulates motor neurons to control the pelvic floor muscles to perform 20,000 Kegel exercises, which is non-invasive and non-invasive to improve pelvic floor muscle relaxation and other symptoms.

“ SELECTIVE PURCHASE

SEATED WORKING HEAD

High-energy-focused electromagnetic technology fully activates pelvic floor muscle. It perfectly simulates the curve of the buttocks and accurately targets the gluteus. The 15° inclination design allows the legs to relax naturally. The raised support area in the center accurately fits the pelvic floor muscles. It's suitable for men and women of all ages and effectively solves various pelvic floor muscle injuries.



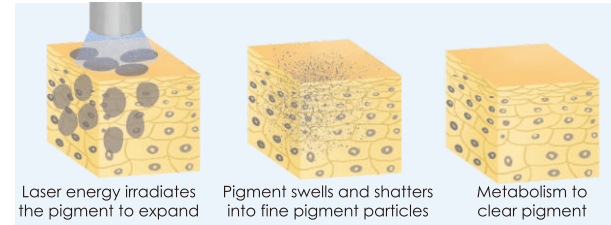
Nicely Fit in Multiple Models



Principle

1 picosecond is equivalent to one second to the twelfth power. It is output in an ultra-short pulse, with a transient lens, instantly condenses and focuses the laser energy and releases 100% on the point of action, start repairing growth factors, and promote collagen and elastic fibers. The renewal and proliferation of skin accelerates the metabolism of the skin and promotes the excretion of melanin from the body.

- Clear pigmentation from the root to remove stains.
- The blasted pigment particles are naturally metabolized by the human body.
- Effectively inhibit pigmentation into spots.
- Stimulate collagen regeneration to restore youthful skin.



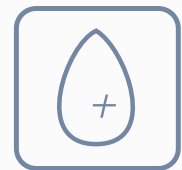
Freckle removal



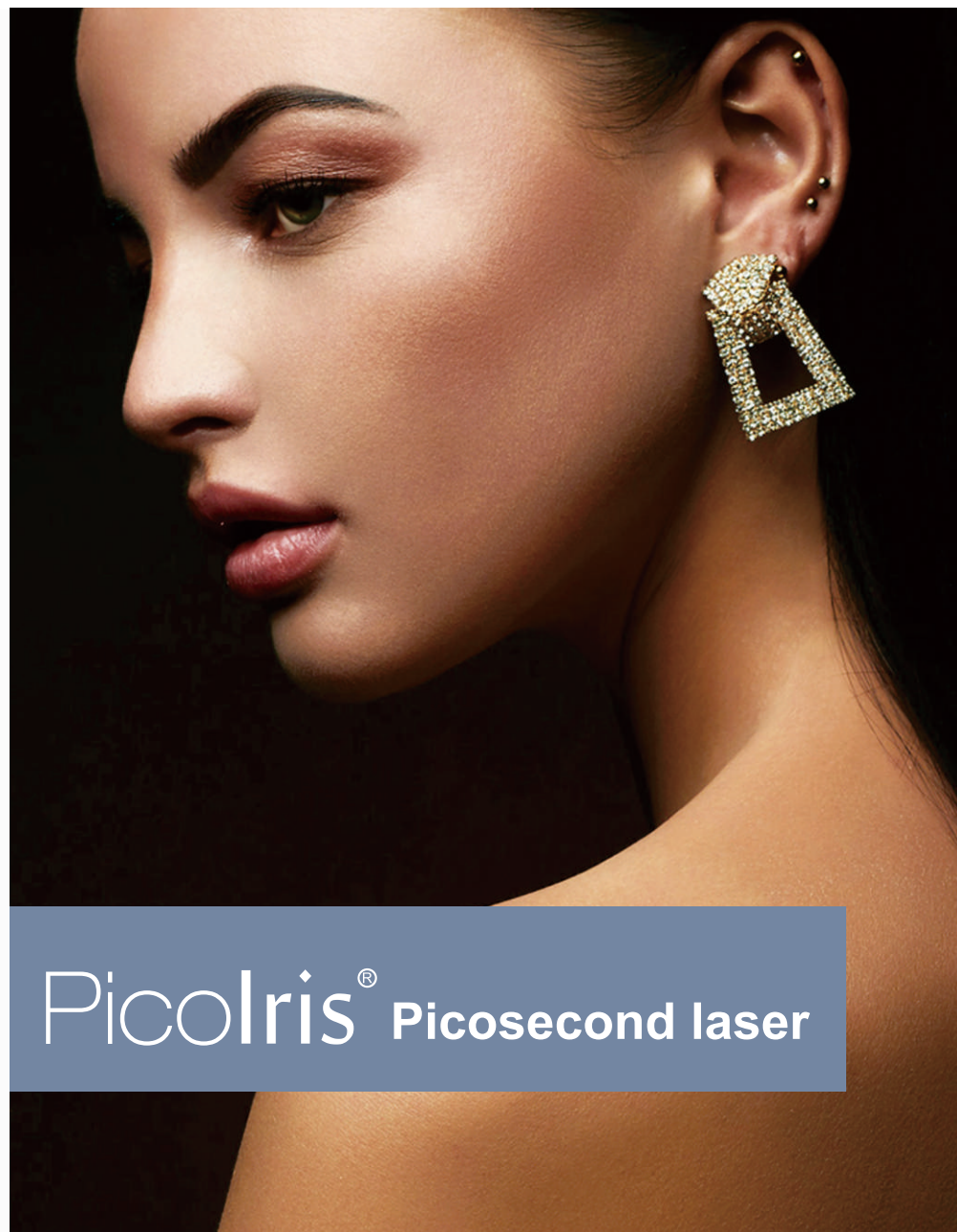
Acne clearance



Facial rejuvenation



Tattoos removal



Technical advantages



Wide treatment range

Three wavelengths act on pigmented skin with different depths and colors.



Fast treatment

Various light spots and frequency adjustable, flexible and efficient operation



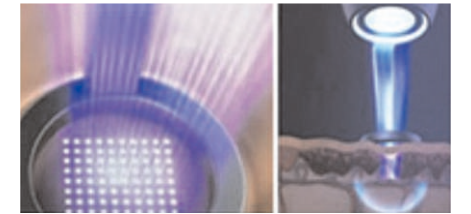
High stability

Exclusive uniform light lens, even energy distribution.



Ultra-short pulse

500ps ultra-short pulse can turn melanin into 'fine sand' in seconds.



Treatment Application

- Freckle removal, Tattoo removal, skin whitening and skin rejuvenation, Acne marks, Facial rejuvenation



Configuration advantages



USA-imported Laser Generator

Pulse width output is more accurate, powerful and error-free, wavelength precision reduces epidermal damage



Customized Korean Seven-Joint Arm

Flexible use, more precise clinical operation points, reducing operation fatigue



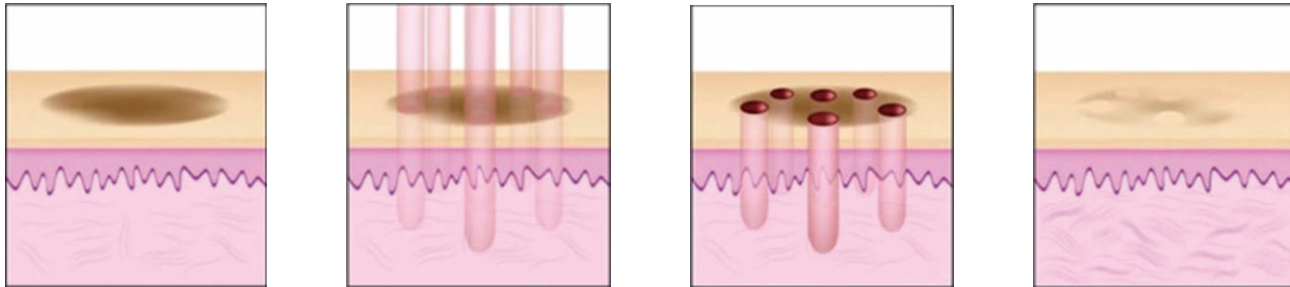
Built-in Beam Homogenizer

The built-in Beam Homogenizer ensures that the reflected energy of the light is more uniform, the target area is more complete, and polarized light is avoided.



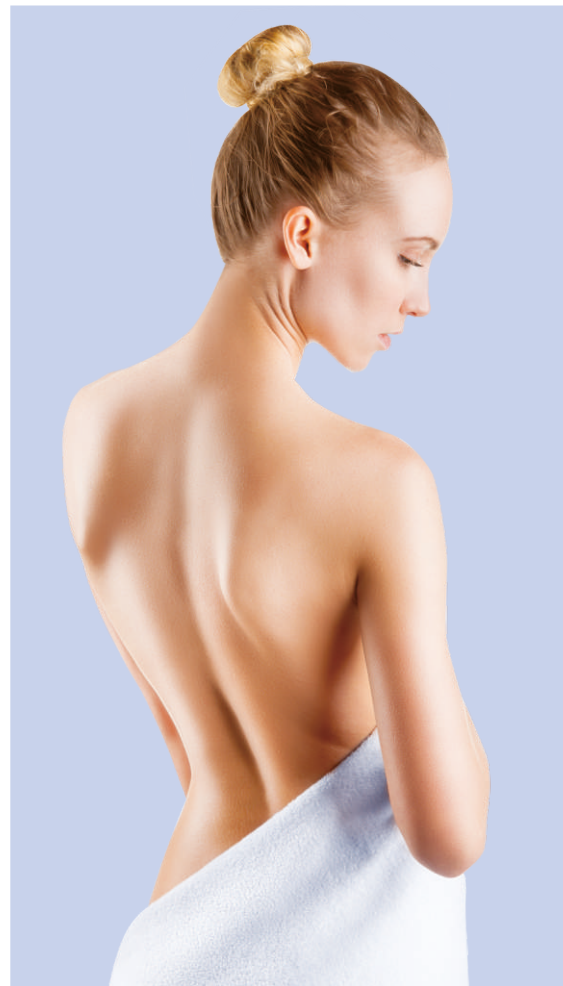
Principle

The CO₂ Fractional Laser (10600nm) using a special scanning galvanometer, the complete laser is decomposed into countless microbeams, and uniformly small micropores with a diameter of 50um-80um are formed on the skin. A columnar thermal reaction occurs between the micropores. When the heat gradually reaches 300°C will form thermal exfoliation, and with certain thermal coagulation and thermal effects, it will activate the skin's self-healing function, and increase the number of fibroblasts and bladder cells, thereby making the skin rejuvenation and tightening



Three Core Functions: An instrument has one-stop solution such as private rejuvenation, skin rejuvenation and tightening.

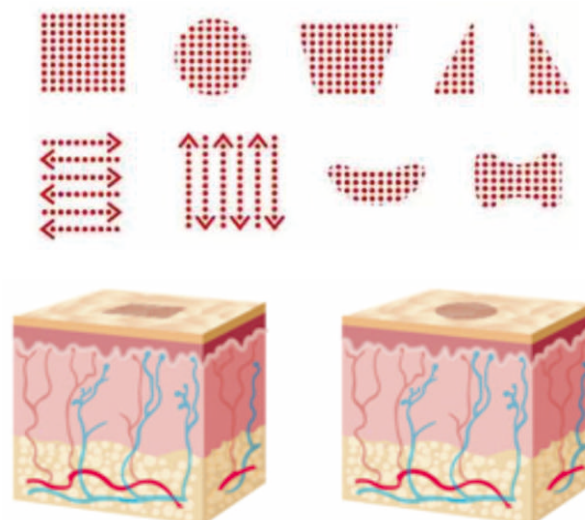
◆ Dot scanning mode ◆ High-energy Pulse Mode ◆ Non-invasive Private Mode



Fractional Master

Spot-focused Scanning, Skin Rejuvenation,
Care For Worldwide Women !

Multiple Focal Spot Rectangular Patterns



Application



Skin Rejuvenation
& Tightening



Private Maintenance



Scar Recovery



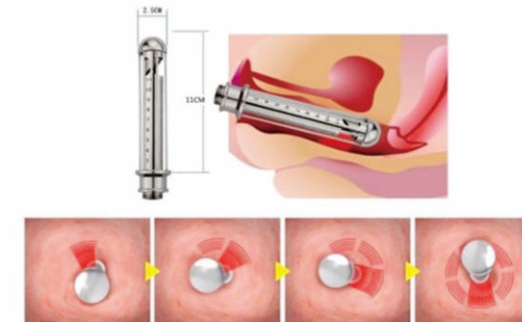
Post-partum Recovery



Vegetation Removal

Treatment Features

- High-precision and uniformly dispersed beams, can provide a focal spot diameter of 50um-80um, and the tiny beams can reach the deep layer of the skin.
- It acts on the vaginal wall in a 360° circular emission mode without damaging the surrounding tissues.



- ✓ Accurate positioning
- ✓ Multi-functional
- ✓ More efficient
- ✓ More secure



More Secure



More Efficient



All Around

Configurations



Lasers imported from the USA with
sufficient and stable energy



Galvo mirror imported from Germany
with balanced micro-beam energy

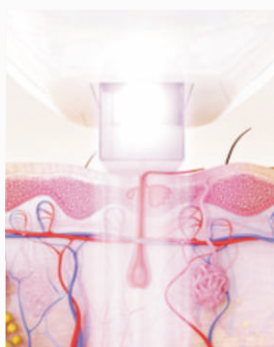


7-joint arm imported from South Korea,
flexible operation and precise output



Principle

The DPL narrow-band precision light technology adopted by the intense pulsed light therapy instrument is a narrow-band light between laser and photons. It is known as an epoch-making optical beauty technology because of its remarkable curative effect. It has a global "100 nanometer ultra-narrowband" pulse Light title. Its light energy is targeted and concentrated, and it can excite selected narrow-spectrum pulsed light in the 100nm band. This band also contains the absorption peaks of melanin, oxygen and hemoglobin. This allows the effective treatment energy to be accurately concentrated, which can be fast, accurate, and Efficiently solve various skin problems such as facial stains and telangiectasia (red face), and the whitening effect is also extraordinary.



Treatment application

Work for all parts hairs of the body, spot removal, skin rejuvenation and whitening, acne clearance, wrinkles, etc.

SHR

CFDA ISO13485



Xenon lamp
German imported
1 million times lifespan

Biggest spot size
50x10
mm

Energy frequency OF Laser
20HZ



Accurate Positioning

DPL's precise light energy are targeted and concentrated, achieving faster treatment speed and uniform energy distribution for large-area lesions.



Hair Removal

With the new pulse pattern and repetition frequency, the treatment speed is increased by 3-5 times, which effectively solves the problems of pain and slow hair removal.



Sapphire Cooling

With the contact sapphire cooling system, the surface temperature of the probe reaches -5°C at the moment of starting, and there is no need to shut down the temperature during the whole treatment process.



Safe and Comfortable

The gold standard hair removal wavelength, and its safety has been extensively verified in clinical practice, and has become the first choice for many beauty lovers.



Non-Invasive

No anesthesia, only slight energy and heat, no damage to skin tissue, no physical or chemical adverse reactions after treatment.



Short Treatment Time

300,000 times of fast flashing light, short treatment time, and greatly improved operation efficiency.



Three-Wavelength + Cooler Partner, Safe and Efficient, Double the Result with Half the Effort



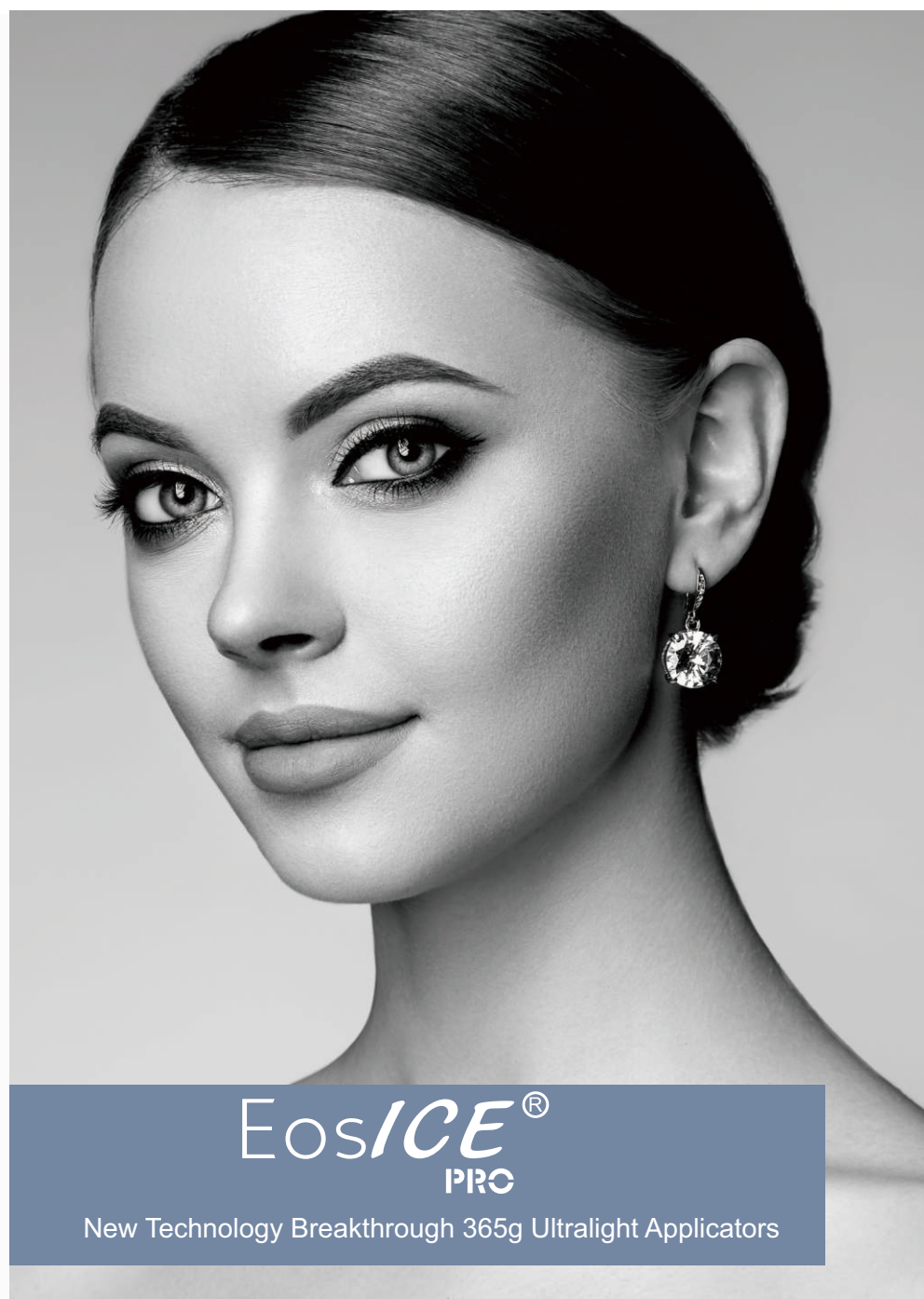
365g Super Light Handpiece

- ◆ **Alex 755nm:** The wavelength of 755nm can provide enough energy to absorb melanin clusters, which can be used in the widest range of hair types and colors, especially light-colored and thin hair.
- ◆ **Diode 808nm:** The typical wavelength of laser hair removal, the hair follicle penetration rate is high, and the frequency is fast. Large spot area applicators meets the purpose of rapid treatment
- ◆ **YAG 1064nm:** with low melanin absorption rate, specifically for dark skin treatment



Exclusively Patented Ice Compress Applicators

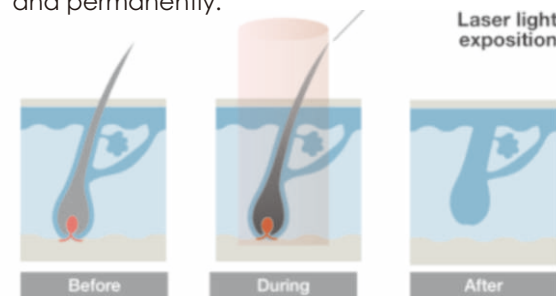
Cryo-anaesthesia before treatment, and soothing ice compress after treatment. The ice-applied applicators can be as low as -15 °. It replaces traditional ice packs, relieves pain and hair removal.



EosICE[®]
PRO

New Technology Breakthrough 365g Ultralight Applicators

Three wavelengths are emitted at the same time during the treatment process, according to different hair, it acts on the melanocytes of the papilla at the bottom of the hair follicle, and heats the melanocytes in them to inactivate them, which can remove the hair accurately and permanently.



Applications:

Hair removal of the body, such as: face, arms, back, chest, underarms, bikini line, legs, etc.

Technology Advantages



Exclusive Patent

Triple laser, multi-layer energy penetration achieve the purpose of hair removal, clean and comfortable.



Seiko Quality

The laser transmitter imported from the USA, and the service life is not less than 20 million times.



Instant Cooling

The American original high-power semiconductor electronic cooler, water pump imported from Italian provides continuous cooling for the laser to ensure operation for 24 hours.



Powerful Cooling

Adopting TEC cooling system, contact cooling, comfort enhancement.



Hair Removal

The intelligent system automatically recommends appropriate parameters according to skin color, hair softness and hair color, which is quick and effective.



Place at will and more outstanding

