

## TECHNICAL SPECIFICATIONS:

Rated input power	AC110V / 60Hz or AC220V / 50Hz
Maximum input power	3000W
Cooling system	water cooling + semiconductor cooling + cooling fan cooling
Operating capacity	support 24 hours of uninterrupted work (temperature $\leq 26^{\circ}\text{C}$ )
Coolant	pure water, well-filtered distilled water or deionized water
Fuse model	F250V L20A
Working environment temperature	$5^{\circ}\text{C} \sim 40^{\circ}\text{C}$
Relative humidity	$\leq 80\%$



**Lumzeus**<sup>®</sup>

Tel: 0086 - 371 - 55677886 Fax: 0086 - 371 - 55677886 E-mail: info@lumzeus.com  
For more information: [www.lumzeus.com](http://www.lumzeus.com)  
Headquarters: Building 13, Electronic Industrial Park, Hi-tech Development Zone,  
Zhengzhou, Henan, China



**EosICE**<sup>™</sup>  
PLATINA PLUS

Innovative multi-wave  
hair removal platform

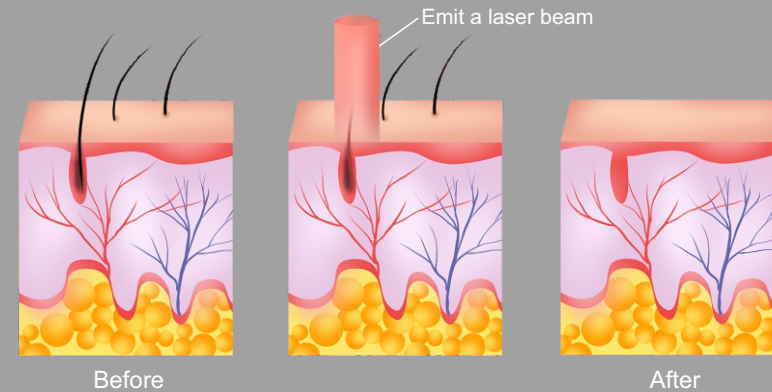
Medical CE FDA

ISO 13485

# Principle

## EosICE Platina--755nm, 808nm, 1064nm Innovative Handpiece.

The three-wavelength laser is used to satisfy various skin and hair treatments. The specially designed multi-pulse laser heats the hair follicles to 65°C and above under high energy density output. Through the rapid sliding of the applicator, the energy reaches the deep hair follicles, so that the hair follicles cannot grow stem cells. The growth activity is lost, so that hair removal can be completed without damaging the epidermis.



## Portable design with big Android Screen

Integrating advanced optoelectronic technology and lines, through a unique streamlined shape, customers can feel the extraordinary experience brought by the integration of high and new technology in comfort and pleasure.



- ◆ Small size
- ◆ Space saving
- ◆ Smart monitor

*Perfect painless hair removal,  
more high-end!*

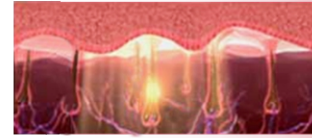
# DIODE LASER HAIR REMOVAL

Extra strong performance

“German  DILAS Laser Bars”



# HANDLE



- SPOT SIZE:15mm\*15mm
- The latest generation of laser technology, ultra light, small and strong energy

## Unprecedented enjoyment of hair removal

**Smart touch screen:**sensitive touch, efficient parameter setting scheme

**Super high power:** the energy is 3-4 times higher than the traditional, the output is more stable

**20-40 million times the heart of energy:** high-quality escort of German DILAS Laser Bars

**Fast sliding mode:** More effective, convenient, and timesaving

**1.5 times work efficiency:** 72 hours of super long work to achieve sufficient working time



Portable Design



Applicator Features



Faster Operation



Intelligent Configuration

The powerful combination of classic three wavelengths (755nm, 808nm, 1064nm) fully covers all skin tones and hair.

Gold standard of laser hair removal

### ALEX 755nm WAVELENGTH

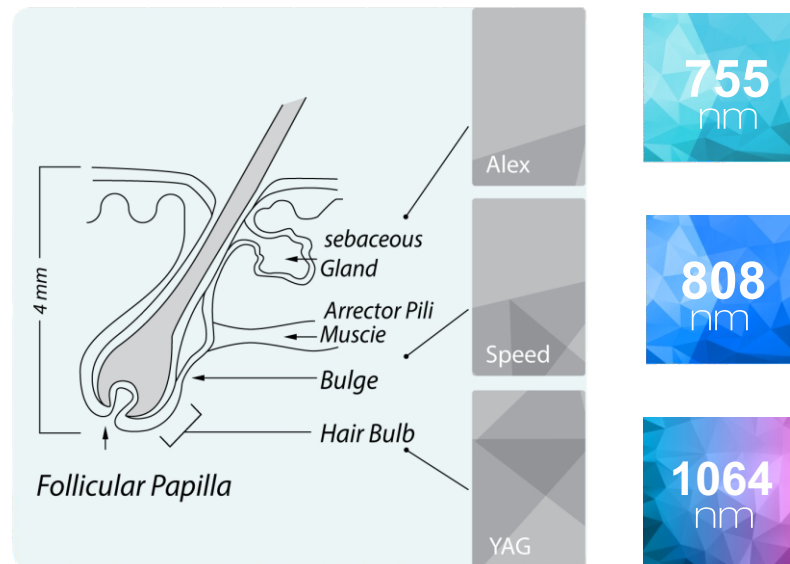
The Alexandrite wavelength offers more powerful energy absorption by the melanin chromophore, making it ideal for the widest range of hair types and color- especially lightcolored and thin hair. With more superficial penetration, the 755nm wavelength targets the Bulge of the hair follicle and is especially effective for superficially embedded hair in areas such as the eyebrows and upper lip.

### SPEED 808nm WAVELENGTH

The classic wavelength in laser hair removal, the 808nm wavelength, offers deep penetration of the hair follicle with high average power, a high repetition rate and a large 2cm spot size for fast treatment. The 808nm has a moderate melanin absorption level making it safe for darker skin types. Its deep penetration capabilities target the Bulge and Bulb of the hair follicle while moderate tissue depth penetration makes it ideal for treating the arms, legs, cheeks and beard.

### YAG 1064nm WAVELENGTH

The YAG 1064nm wavelength is characterized by lower melanin absorption, making it a focused solution for darker skin types. At the same time, the 1064nm offers the deepest penetration of the hair follicle, allowing it to target the Bulb and Papilla, as well as treat deeply embedded hair in areas such as the scalp, arm pits and pubic areas. With higher water absorption generating a higher temperature, the incorporation of the 1064nm wavelength increases the thermal profile of the overall laser treatment for a highly effective hair removal.



# EosICE™ PLATINA PLUS



## 3 Wavelengths In One Handle

755nm+808nm+1064nm, fully covers all skin tones and hair.



## Super High Power

More effective, faster and safer.



## Smart Cooling System

The sapphire cools down to  $-15^{\circ}\text{C}$ , and the reliable and constant cooling system ensures the comfort and safety of the skin.



## Intelligent Operation System

Built-in data of diversified clinical research for many years, and index can be set freely.

## SCREEN LINKAGE

### Handle screen intelligent linkage

Touch screen of handles, directly adjust parameters  
Convenient and fast operation

- ◆ 15" display
- ◆ 4K HD monitor



# Actual Effect of Depilation

Before

After



**Armpit** Hair Removal

Before

After



**Back** Hair Removal

Before

After



**Chest** Hair Removal

Before

After



**Leg** Hair Removal

Before

After



**Labial** Hair Removal

Before

After



**Cheek** Hair Removal