



Lumzeus®

Cell balance therapy  
Immune fever therapy

**EHIT™**  
Endogenous heat immunotherapy

**448KHz**  
Give The Body and Cells A Brand New Life



EHIT™ Endogenous Heat Immune Technology™ uses the magical modulated wave frequency of 448kHz to make cells move across the membrane, it generate deep-source heat and penetrate the body system, directly acting on various tissue cells of the body and activating body functions. The energy go deep into the bones, muscles and then to the viscera and organs, increasing the metabolism and anti-aging functions of the whole body.



### ***What is EHIT?***

It s the unique system that stimulates intra and extra cellular ion exchange restoring physiological cell electrical activity, which enables the correct functionality of the cells.

Based on the 448kHz freouency which is the key of our active cell therapy, it activates biostimulation, stimulates microcirculation and promotes metabolic hyperactvation, while respecting cell physiology.

The 448kHz frequency enhances ion mobilisation through the intra and extracellular matrix that restores the permeability of cell membrane potential.

The cellular electrical balance optimises tissue recovery by supplying oxygen and nutrients. through the body's natural blood supply, The circulatory activation (microcirculation and vasodiation) stimulates proliferation and fibroblasts activity generated by collagen. The result is tissue regeneration promoted by the 448kHz frequency.





## Treatment Principle

Endogenous heat immunotherapy, adopts an advanced system with a frequency of 448kHz, and uses electric frequency to promote biological effects, promote cell activation and regeneration, stimulate stem cell proliferation, accelerate detoxification and lipolysis.

Increasing Core Body Temperature Up To 40~50℃



Expansion of Artery And Capillary



Increasing Blood Flow Rate



Increase in Collagen

Stimulate of  
Immune System

Increase in  
Metabolism

Removal of Toxins



Face Lifting



Healthy



Obesity Care

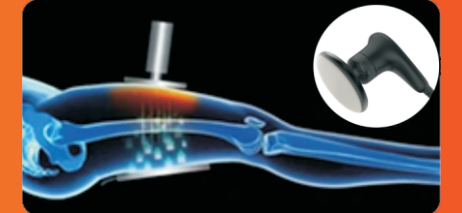


Reduce Pain



### **R** ( Resistive Electrode Transfer )

Insulated Electrode  
Current to be transferred by Capacity to patient  
Go into 3~5cm depth of skin  
Effective for skin lifting, pain relief



### **C** (Capacitive Electrode Transfer )



Stainless Steel Electrode (not Insulated)  
Current to be transferred directly to the patient  
Go into 9~12cm depth of skin  
Effective for the subcutaneous fat





## One treatment + triple effect

### 1) Thermal mode:

Rapidly increase metabolism, help tissue detoxification and drainage, stimulate fat decomposition, generate new collagen and stimulate heat shock protein.

### 2) Non-thermal mode:

Activate metabolism, provide more nutrients for fibroblasts, and accelerate collagen and elastin synthesis.

### 3) Warm mode:

Increase blood flow rate, help cells replenish oxygen, help metabolize waste in the body and promote metabolism.

## Technology Application



### Reliable temperature control

The built-in high-precision temperature sensor is evenly distributed in energy and does not require frequent inspection of the temperature of the tissue, which has high accuracy and high stability. The resolution is  $0.01^{\circ}\text{C}$  and  $\pm 0.03^{\circ}\text{C}$ , which can realize real-time temperature control based on monitoring data.



### Advanced heating method

The unique design can heat the subcutaneous and deep skin tissues evenly, and increase the temperature of all parts of the body, thereby avoiding the risk of burns caused by local skin high temperature, it is automatically eliminating energy concentration to ensure energy distribution uniformly.



### No damage to normal cells

It is no side effects and no damage to other tissues, it safely helps the body metabolize waste, carbon dioxide and lipid junk cells in fat.





## Make the body age down Every cell full of vitality

**Thermal therapy:** Enhance base temperature, regulate the physical acidic constitution .

**Immunity:** Clear aged cells and toxins and improve immunity.

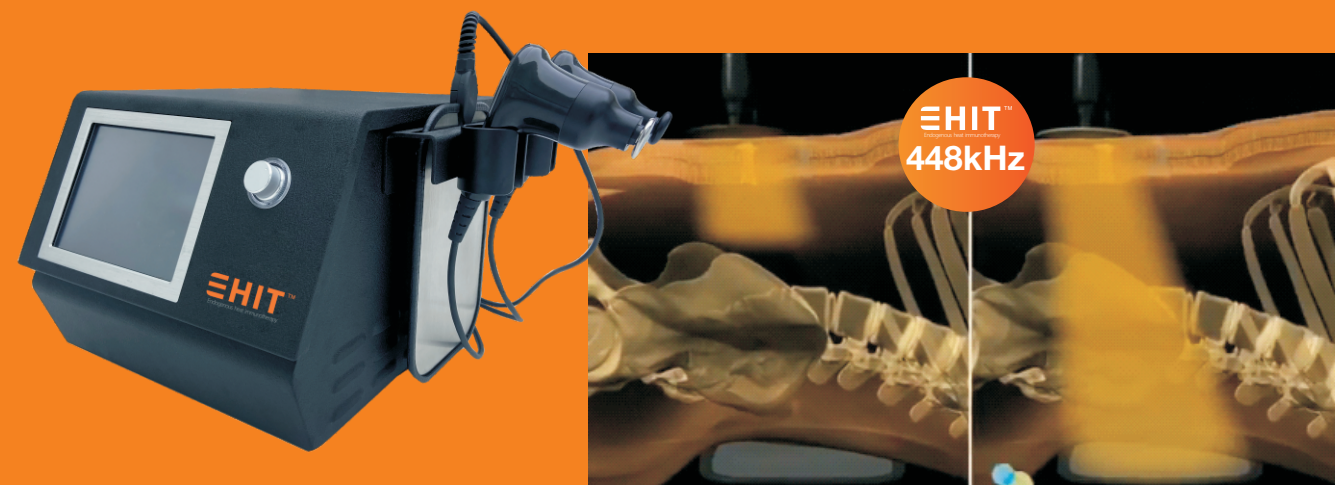
**Senescence:** Activates body cells and helps tissue cells to regenerate.

**Body sculpting:** Reduce excess fat, tighten the skin, lose weight and sculpt your body.

**Pain:** Regulate chronic pain in shoulders, neck and waist, improve microcirculation and muscle regeneration.

## Professional repairation ability

- Dead cells clearance in **30** days
- Immunity enhancement by **2** times
- Pain decreases **81%**
- Muscle strain recovery **97%**
- Visceral fat removal in **30** days
- Metabolism enhancement by **6** times
- Visceral fat reduction **4-6 levels**



*The professional care brought by EHIT will truly activate your body's various functions and improve your subhealth state.*

